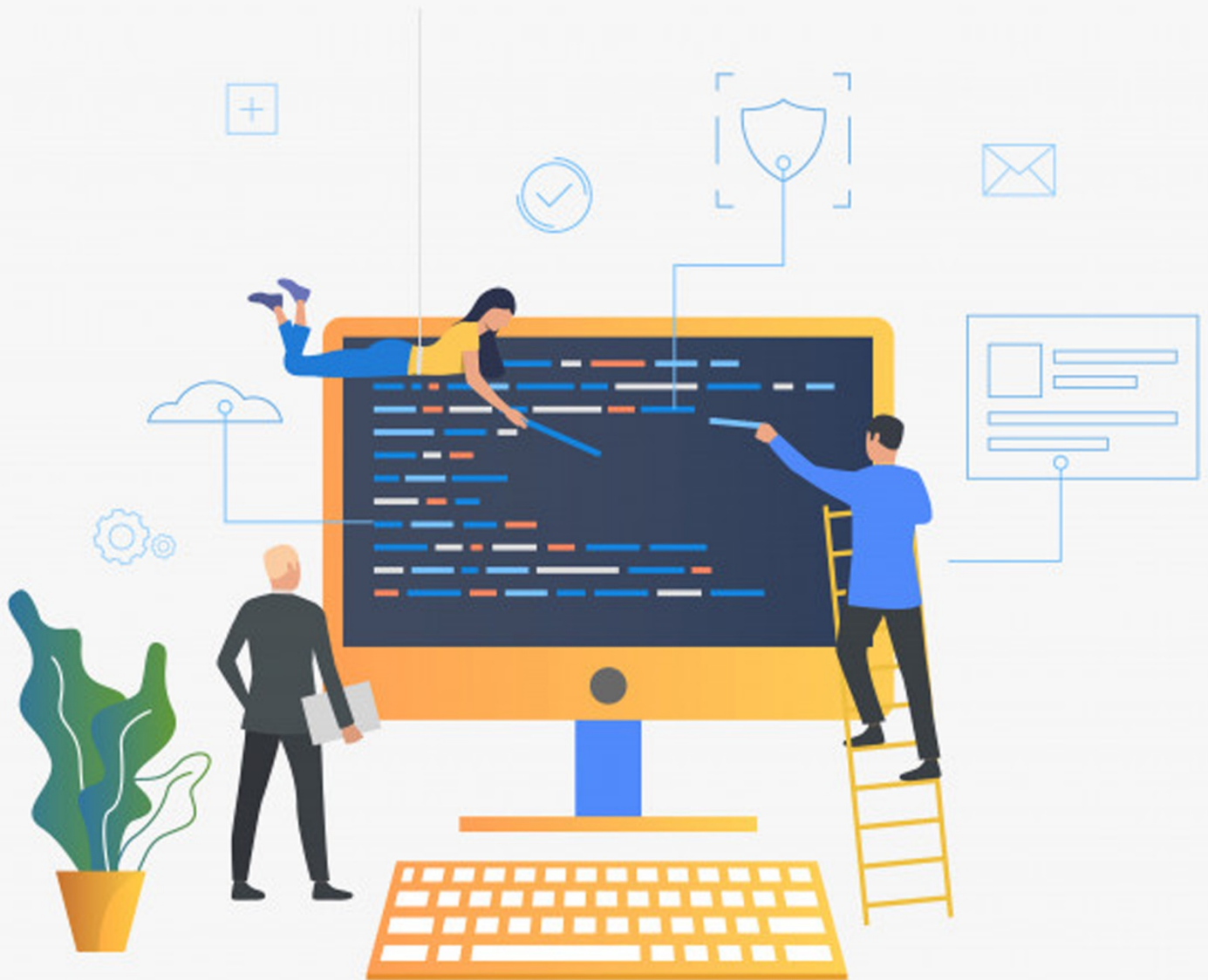
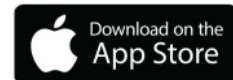


# IBPS SO IT OFFICER PREVIOUS YEAR QUESTION PAPER





## Stay Connected With SPNotifier



TM



**EBooks for Bank Exams, SSC & Railways 2020**

**General Awareness EBooks**

**Computer Awareness EBooks**



## **Monthly Current Affairs Capsules**

**1). The CMM Level at which measurable goals for quality and productivity are established in**

- a) Level 1
- b) Level 3
- c) Level 5
- d) Level 4
- e) Level 2

**2). When you visit websites spyware may be substantially downloaded. This is called a**

- a) logic bomb
- b) drive – by download
- c) Virus
- d) drive – in download
- e) spyot

**3). Malicious software is known as**

- a) disasterware
- b) badware
- c) illegalware
- d) malware
- e) maliciousware

**4). A data structure where elements can be added or removed at either end but not in the middle is called**

- a) requeue
- b) queues
- c) dequeue
- d) linked lists
- e) stacks

**5). Which of the following are placeholders for literal value in a SQL query being sent to the database**

- a) reduction and resolution variables
- b) resolution variables
- c) reduction variables
- d) assimilation variables
- e) bind variables

**6). In TPS systems, an output that signifies that a specific transaction has taken place is called a (n)**

- a) detail report
- b) action document
- c) inception report
- d) exception report
- e) Summary report

**7). \_\_\_\_\_ is the process whereby media files such as a video start playing as they are downloading**

- a) Streaming
- b) Pushing
- c) Dragging
- d) Flashing
- e) Pulling

**8). which of the following statements about Stacks is incorrect?**

- a) New nodes can only be added to the top of the stack
- b) Stacks can be implemented using linked lists
- c) Stacks are first – in, first – out data structures



- d) The last node (at the bottom) of a stack has a null(0) link
- e) stacks are very useful

- c) internetwork
- d) local area network
- e) intranet

**9). The UML designation for a public class member is**

- a) the symbol @
- b) the symbol #
- c) the minus symbol (-)
- d) The plus symbol (+)
- e) The word public

**10). what type of join is needed when you wish to include rows that do not have matching values?**

- a) Equi - join
- b) Indefinite join
- c) Intermediate join
- d) Natural join
- e) Outer join

**11). A home page is**

- a) the web page that identifies a website
- b) a webpage you eventually reach by clicking a series of hyperlinks
- c) a webpage created by an individual home user, as opposed to the one created by a
- a) corporation
- d) the last page of the website
- e) the web page you like to visit the most

**12). A network covering a large geographic area is usually referred to as a(n)**

- a) huge area network
- b) wide area network

**13). Frame relay**

- a) does not use error correction routines
- b) is used by facsimile machines
- c) uses error – correction routines
- d) does not work well on the internet
- e) is an outdated technology

**14). The design tool used to illustrate the logic of a new computer software logic diagram that uses symbols to represent program elements is called a (n)**

- a) data logic chart
- b) data flow diagram
- c) software logic diagram
- d) system flow chart
- e) entry relationship illustration

**15). A web facility that helps to find sites with the information and / or services that is desired is**

- a) a hyperlink
- b) the top inner domain
- c) a search engine
- d) a network access point
- e) a blog

**16). When new data are to be inserted into a data structure but there is not available space ; this situation is usually called**

- a) underflow



- b) overflow
- c) Houseful
- d) saturated
- e) empty

- a) Wi - Fi
- b) DNS
- c) HTML
- d) XML
- e) Java

**17). A \_\_\_\_\_ is an acrylic diagram, which has only node with in – degree 0, and other nodes have in degree 1.**

- a) Dis – joint tree
- b) Direction oriented tree
- c) Directed tree
- d) Diagonalised tree
- e) Undirected tree

**21). Every host computer on the internet has a (n)**

- a) similar IP address
- b) unique 10 – digit number
- c) common name and number
- d) unique IP address
- e) Unique 15 – digit number

**18). Which of the following are true of XML ?**

- a) XML is too complicated.
- b) XML is difficult to learn
- c) XML is a set of tags designed to tell browsers how to display text on a webpage
- d) XML is a set of rules for creating tags to describe data
- e) XML is a set of tags designed to tell browsers how to display images on a webpage

**22). Which of the following are five built – in functions provided by SQL?**

- a) SUM, AVG, MIN, MAX, NAME
- b) MIN, MAX, MULT, DIV, NAME
- c) SUM, AVG, MULT, DIV, MIN
- d) SUM, AVG, MIN, MAX, MULT
- e) COUNT, SUM, AVG, MAX, MIN

**19). which of the following forms does not describe parallel ATA devices?**

- a) SCSI
- b) IOE and DOE
- c) IOE
- d) DOE
- e) ATA

**23). Common Gateway Interface (CGI) is which of the following?**

- a) An interface that accepts and returns data that may be written in SQL
- b) A small program that executes within other application and is stored on the server
- c) A small program that executes within other application and is stored on the client
- d) A small program that executes within other application and is stored on the client or the server
- e) An interface that accepts and returns data that may be written in any language that produces executable file

**20). \_\_\_\_\_ maps domain name to their IP addresses.**



24). Which of the following wildcard masks is most useful for matching all IP packets in subnet 10.1.128.0, mask 255.255.255.0?

- a) 0.0.0.0
- b) 0.0.0.255
- c) 0.0.0.240
- d) 0.0.0.31
- e) 0.0.15.0

25). Which of the following is not a testable Web App security element?

- a) Encryption
- b) Authentication and Encryption
- c) Firewalls
- d) Authentication
- e) Penetration

26). \_\_\_\_\_ are two Important technologies for developing the Semantic web

- a) XML and RDF
- b) XML and HTML
- c) RDF and HTML
- d) Wi-Fi and RDF
- e) Wi-Fi and XML

27). In what kind of storage, we can easily insert, delete, concatenate and rearrange substrings?

- a) Stack
- b) Linked list
- c) Dedicated list
- d) Queue
- e) Array

28). Web Pages can be created using

- a) only Web authoring software
- b) only macromedia Dreamweaver
- c) any Word processor
- d) only Microsoft products
- e) only Microsoft Front Page

29). Which of the following techniques provides redundancy by using two disks and two controllers?

- a) Disk striping
- b) Disk striping with parity
- c) Drive mirroring
- d) Drive mirroring and disk striping
- e) Drive duplexing

30). \_\_\_\_\_ is the term for the use of deception to get someone's sensitive information

- a) Identity theft
- b) Personal engineering
- c) Spoofing
- d) Social engineering
- e) Hacking

31). In addition to an internet connection, which of the following is needed to?

- a) Telnet client
- b) Scanner
- c) Mail client
- d) HP client
- e) Web browser

32). A DBMS performs several important functions that guarantee the integrity and



**consistency of the data in the database. Which of the following is not one of those functions?**

- a) Data integrity management
- b) Data reports
- c) Security and storage management
- d) Data storage management
- e) Security management

**33). A procedural program stores \_\_\_\_\_ in a collection of variables and a set of \_\_\_\_\_ performs operations on it.**

- a) parameters ; arguments
- b) data ; functions
- c) assets ; actions
- d) strings ; operators
- e) numbers ; arguments

**34). Which of the following is the phase of SDLC in which the identified requirements are incorporated into the new system's design**

- a) Maintenance
- b) Physical Layout
- c) Requirement design
- d) Systems design
- e) System blueprint

**35). What does DLCI stand for?**

- a) Data Link Circuit Identifier
- b) Data Link Connection interrupt
- c) Data Link Connection Indicator
- d) Data Link Circuit Indicator
- e) Data Link Connection Identifier

**36). What standard Java Package is used to move the cursors?**

- a) Javax swing
- b) java cio
- c) java lo
- d) java facio
- e) java awt event

**37). A communications medium where data are transformed into lights pulses is**

- a) coaxial cable
- b) optical fibre
- c) satellite
- d) twisted – pair cable
- e) Copper cable

**38). \_\_\_\_\_ is a standard for security that is inclined at the network or packet processing layer of network communications, as opposed to the application layer.**

- a) Passive FTP
- b) TCP
- c) SSL
- d) S – HTTP
- e) IPSec

**39). Locking may cause which of the following problems?**

- a) Deadlock
- b) Versioning
- c) Versioning and Deadlock
- d) Erroneous updates
- e) Erroneous updates and deadlock

**40). Which of the following is not a WebApp Interface mechanism ?**

- a) Links
- b) Cookies





- c) Browser
- d) Cookies and Links
- e) Forms

- d) Continuing without any recovery
- e) Switching to an existing copy of the database

**41). \_\_\_\_\_ is one of the older and slowest methods an intruder might use to scan a network to determine which of a range of IP addresses map to live hosts.**

- a) Ping sweep
- b) Phreaking
- c) Smurfing
- d) War driving
- e) Brute force cracking

**45). \_\_\_\_\_ is the integration of economic, social, cultural and ecological facets of life, enabled by information technologies.**

- a) Business environment
- b) Neutralization
- c) Nationalization
- d) Regionalization
- e) Globalization

**42). which of the following is used to create and delete views and relations within tables?**

- a) SQL Data Identification Language
- b) SQL Data Identification and Manipulation Language
- c) SQL Data Relational Language
- d) SQL Data Definition Language
- e) SQL Data Manipulation Language

**46). \_\_\_\_\_ is the process and tools used by managers and executives with the support of the project team to manage employee resistance.**

- a) Resistance management
- b) Change management
- c) Detailing management
- d) Probing management
- e) Blasting management

**43). Criminal hacking is called**

- a) cracking
- b) a virus
- c) a trojan horse
- d) a worm
- e) blasting

**47). A cross life – cycle activity of system development is**

- a) data modeling
- b) fact finding
- c) prototyping
- d) data flow diagram modeling
- e) object modeling

**44). Backward recovery is which of the following?**

- a) Where the before – images are applied to the database
- b) Where the after – images and a = before – images are applied to the database.
- c) Where the after – images are applied to the database

**48). The result of a SQL SELECT statement is a(n)**

- a) report
- b) file
- c) page





- d) table
- e) form

10). e)

11). a)

12). b)

**49). Web App performance tests are designed to**

13). a)

- a) assess Web App usability
- b) test network performance
- c) test network connectivity
- d) evaluate page loading times
- e) simulate real – world loading situations

14). d)

15). c)

16). b)

17). c)

**50). A CASE SQL statement is which of the following?**

18). d)

- a) A way to establish a data definition in SQL or establish a loop in SQL
- b) A way to establish an IF – THEN – ELSE in SQL
- c) A way to establish a loop in SQL
- d) A way to establish a data definition in SQL
- e) Establish a loop in SQL and establish an IF – THEN – ELSE in SQL

19). a)

20). b)

21). d)

22). e)

23). e)

24). b)

25). e)

**Solutions:**

26). a)

1). d)

27). b)

2). b)

28). c)

3). d)

29). e)

4). c)

30). d)

5). e)

31). e)

6). b)

32). b)

7). a)

33). b)

8). c)

34). c)

9). d)

35). e)



36). e)

37). b)

38). e)

39). a)

40). c)

41). a)

42). d)

43). a)

44). a)

45). e)

46). a)

47). b)

48). d)

49). e)

50). b)







## Stay Connected With SPNotifier



TM



**Quantitative Aptitude EBooks**

**Reasoning Ability EBooks**

**English Language EBooks**