



LIC AAO

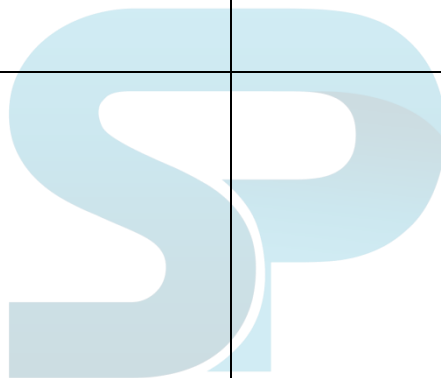
MAINS COMPUTER AWARENESS
IMPORTANT QUESTIONS



Stay Connected With SPNotifier



TM

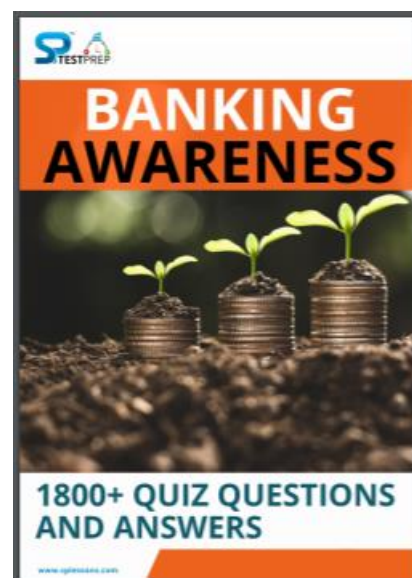
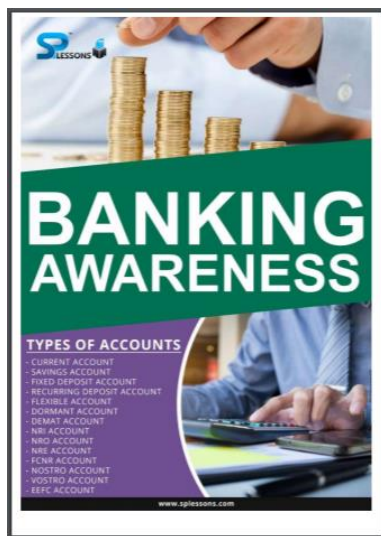
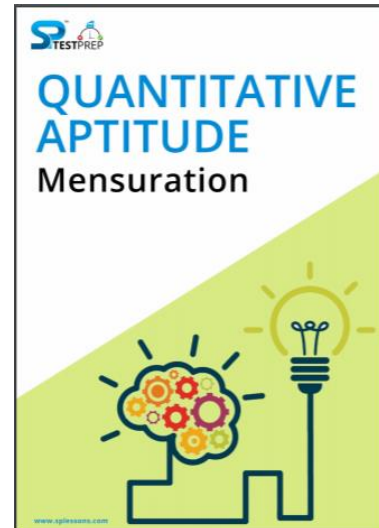
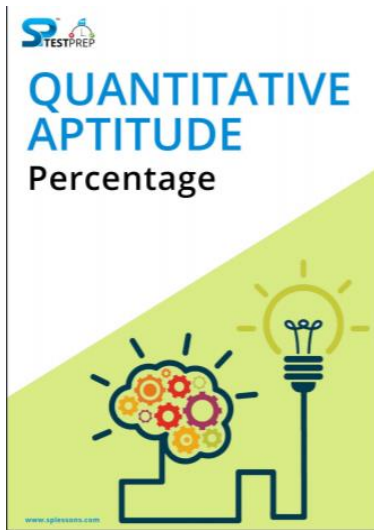


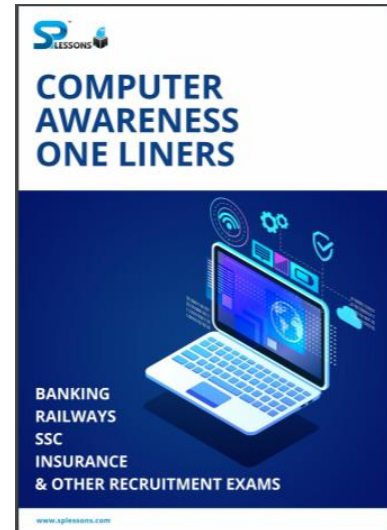
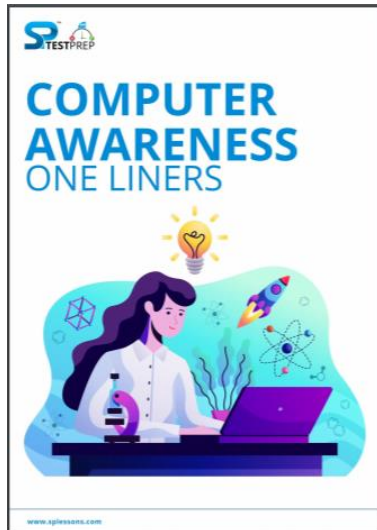
EBooks for Bank Exams, SSC & Railways 2020

General Awareness EBooks

Computer Awareness EBooks

Monthly Current Affairs Capsules





Click Here to Download the EBooks for several exams

[Click Here to Check the topics related LIC AAO](#)

[LIC AAO Notification](#)

[LIC AAO ID Verification](#)

[LIC AAO Test Day Instructions](#)

[LIC AAO Exam Duration](#)

[LIC AAO FAQ Test Day](#)



1. Which of the following topologies has the highest reliability?

- A. Star topology
- B. Bus topology
- C. Ring topology
- D. Mesh topology
- E. None of these

2. Which among the following term is used for: Unauthorized copying of software to be used for personal gain instead of personal backups?

- A. program thievery
- B. data snatching
- C. software piracy
- D. program looting
- E. data looting

3. EDBIC code can support how many different representation of characters?

- A. 256
- B. 149
- C. 1024
- D. 64
- E. 16

4. The main webpage of a website is also known as -

- A. Contents Page
- B. Home Page
- C. Introduction Page
- D. First Page
- E. Icebreaker Page

5. What is a hyperlink?

- A. It is a text or image that you can click on to jump to a new document/page.
- B. It is an input type for multimedia files.
- C. It is a collection or directory of web pages.
- D. It is the home page of a site.
- E. None of the above

6. What is a technique used to gain unauthorized access to computers, whereby the intruder sends messages to a computer with an address indicating that the message is coming from a trusted host?

- A. Identity Theft
- B. Forging
- C. IP Spoofing
- D. Pharming
- E. Phishing

7. Portrait and Landscape are:

- A. Page Orientation
- B. page layout
- C. page size
- D. page view
- E. none of the above

8. Internet access by transmitting digital data over the wires of a local telephone network is provided by:

- A. leased line
- B. digital subscriber line
- C. digital signal line
- D. MODEM
- E. None of the above

9. Which of the following network devices is also called a concentrator?

- A. Switch
- B. Router
- C. Brouter
- D. Repeater
- E. Hub

10. What type of web technology creates an online community where people can make statements and others can read and respond to those statements?

- A. I-Journal
- B. Podcast
- C. ASP



- D. Blog
- E. None of the above

11. What is the full form of EDI in computer?

- A. Electronic Data Image
- B. E-mail Data Interchange
- C. Electronic Data Interchange
- D. Electronic digital Interchange
- E. None of these

12. What is the use of "&" symbol in Ms EXCEL?

- A. allows you to make one reference for multiple cells located between 2 cells
- B. is used to separate arguments in Excel spreadsheet formulas.
- C. it is an intersection operator
- D. For Sum of two cells
- E. None of these

13. Which of the following shortcut key use to close the current window?

- A. Alt+F7
- B. Shift+F4
- C. CRLT+F6
- D. Alt+F4
- E. None of these

14. What are programs such as Microsoft Edge that serve as navigable windows into the Web called as?

- A. Hypertext
- B. Web browsers
- C. Internet
- D. Networks
- E. Windows Navigator

15. Which among the following is a self-contained step-bystep set of operations to be performed?

- A. System Software
- B. Algorithm
- C. Network topology
- D. Application software

- E. Utility software

16. which of the following is an intersection of a row and column in a spreadsheet?

- A. Formula
- B. Worksheet
- C. Address
- D. Cell
- E. None of these

17. which of the following is a set of rules computers use to talk to each other?

- A. Syntax
- B. HTML
- C. DOS command
- D. Protocol
- E. None of these

18. Which of the following topology have a central controller or hub?

- A. Star
- B. Mesh
- C. Ring
- D. Bus
- E. None of these

19. Which shortcut key is used to create a new folder in MS Windows?

- A. Right Click Button+W+Enter
- B. Ctrl+W+Shift
- C. Right Click Button+F+Enter
- D. Right Click Button+Q+Enter
- E. Ctrl+Shift+N

20. The first computers were programmed using which of the following language?

- A. Assembly language
- B. Machine language
- C. Source code
- D. Object code
- E. None of the above



21. Which of the following is not example of Utility Software?

- A. Backup software
- B. Antivirus software
- C. Disk tools
- D. Media Players
- E. All of the above are examples of Utility Software

22. Copying a process from memory to disk to allow space for other processes is called ____.

- A. Swapping
- B. Deadlock
- C. Demand Paging
- D. Page Fault
- E. Cloud Computing

23. Which of the following is a translator program used for assembly language?

- A. Compiler
- B. Interpreter
- C. Translation
- D. Translator
- E. Assembler

24. What is the technical term for the devices connected in a network?

- A. Hubs
- B. Nodes
- C. Sections
- D. Attachment units
- E. Access points

25. Which of the following is the communication protocol that sets the standard used by almost every computer that accesses web based information?

- A. XML
- B. DML
- C. HTTP
- D. HTML
- E. RIP

26. What is the attempt to acquire sensitive information such as usernames, passwords, and credit card details (and sometimes, indirectly, money) by masquerading as a trustworthy entity in an electronic communication?

- A. Phishing
- B. Spoofing
- C. Identity theft
- D. Authentication
- E. Spamming

27. Communication channel is shared by all the machines on the network in:

- A. broadcast network
- B. unicast network
- C. multicast network
- D. Internet Protocol Address
- E. none of the above

28. A(n) _____ converts all the source code into machine code, creating an executable file.

- A. linker
- B. assembler
- C. compiler
- D. interpreter
- E. None of these

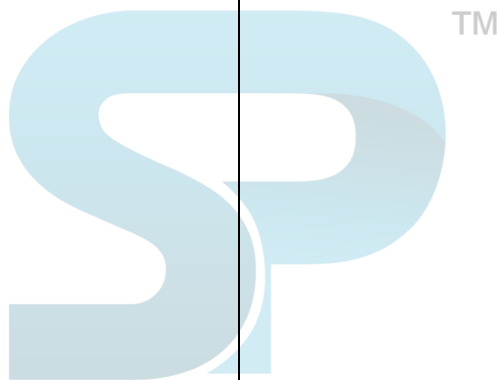
29. What is the term that refers to an ad hidden inside software that you downloaded from an internet site?

- A. Spam
- B. Cookie
- C. Phish
- D. Adware
- E. None of these



30. In PowerPoint, what is the function of Alt+N in navigating the ribbon with only the keyboard?

- A. Open the Transitions tab
- B. Open the Home tab
- C. Open the Insert tab
- D. Open the Review tab
- E. Open the Tell me box





Answers and Explanation

1. **Answer:** D

Explanation: In the mesh topology, each computer is connected to the other with a separate physical link in a network. It is most reliable topology as the network does not get down in case one of the nodes is failed.

2. **Answer:** C

Explanation: Software piracy is the illegal copying, distribution, or use of software.

3. **Answer:** A

Explanation: EBCDIC stands for Extended Binary Coded Decimal Interchange Code. EBCDIC is a 8-Bit code with 256 different representations of characters. It is mainly used in mainframe computers.

4. **Answer:** B

Explanation: A home page is the main page or the introductory page of a website, typically serving as a table of contents for the site.

5. **Answer:** A

Explanation: A hyperlink, or simply a link, is a reference to data that the reader can directly follow either by clicking, tapping, or hovering. Hyperlinks are found in nearly all Web pages, allowing users to click their way from page to page.

6. **Answer:** C

Explanation: Spoofing: It is a type of scam where an intruder attempts to gain unauthorized access to a user's system or information by pretending to be the user. The main purpose is to trick the user into releasing sensitive information.

7. **Answer:** A

Explanation: Page orientation is the way in which a rectangular page is oriented for normal viewing.

8. **Answer:** B

Explanation: Digital subscriber line (DSL or digital subscriber loop) is a family of technologies that are used to transmit digital data over telephone lines.

9. **Answer:** E

Explanation: A hub contains several ports for connecting multiple computers to form a small network. A simple hub is also called a concentrator.

10. **Answer:** D

Explanation: A blog is a regularly updated website or web page, typically one run by an individual or small group that is written in an informal or conversational style.

11. **Answer:** C

Explanation: EDI (Electronic Data Interchange) is the transfer of data from one computer system to another by standardized message formatting, without the need for human intervention. EDI permits multiple companies -- possibly in different countries -- to exchange documents electronically.

12. **Answer:** B

13. **Answer:** D

14. **Answer:** B

15. **Answer:** B

16. **Answer:** D



Explanation: A cell is the intersection between a row and a column on a spreadsheet that starts with cell A1.

17. **Answer:** D

Explanation: A protocol or communication protocol is a set of rules in which computers communicate with each other.

18. **Answer:** A

Explanation: Star topology is a network topology where each individual piece of a network is attached to a central node (often called a hub or switch).

19. **Answer:** E

Explanation: Ctrl+Shift+N is also the shortcut key to open new incognito mode in chrome web browser.

20. **Answer:** B

Explanation: First computers were programmed using machine language.

21. **Answer:** D

Explanation: Utility software is system software designed to help analyze, configure, optimize or maintain a computer.

22. **Answer:** A

Explanation: Swapping concept comes in terms of process scheduling. Scheduler removes process from CPU for duration and reduces the degree of multiprogramming. And after some time these process can again be reintroduced into main memory.

23. **Answer:** E

Explanation: Assembler translates a program written in an assembly language into machine language.

24. **Answer:** B

Explanation: In a computer network, the devices are called nodes.

25. **Answer:** C

Explanation: The Hypertext Transfer Protocol (HTTP) is an application protocol for distributed, collaborative, hypermedia information systems. HTTP is the foundation of data communication for the World Wide Web.

26. **Answer:** A

Explanation: Phishing is typically carried out by e-mail spoofing or instant messaging, and it often directs users to enter details at a fake website whose look and feel are almost identical to the legitimate one.

27. **Answer:** A

Explanation: Broadcast networks: It has a single communication channel that is shared by all the machines on the network. Short messages, called packets in certain contexts, sent by any machine are received by all the others.

28. **Answer:** C

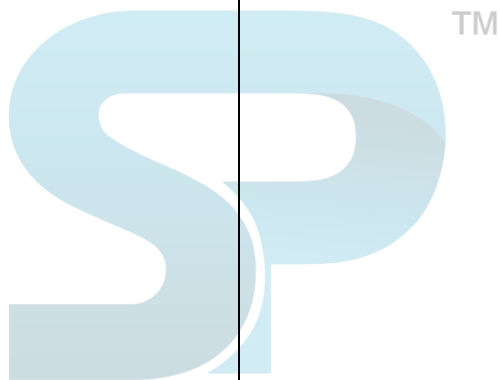
Explanation: A compiler converts all the source code into machine code, creating an executable file.

29. **Answer:** D

Explanation: Adware is software that automatically displays or downloads advertising material such as banners or pop-ups when a user is online.



30. Answer: C





Stay Connected With SPNotifier



TM



LIC AAO Forms

LIC AAO Salary and Perks

LIC AAO Career Progression

LIC AAO – Roles and Responsibilities