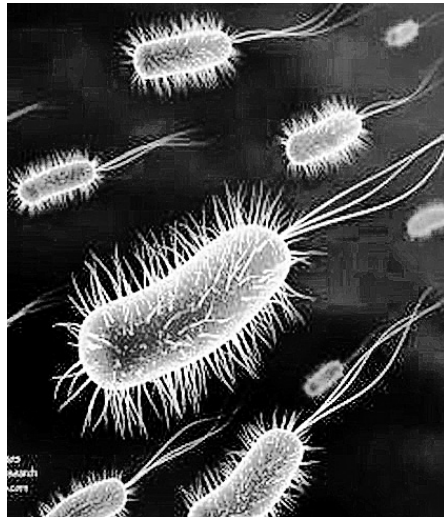


Which fish possess poison sting?

- Which of the following multiply through fragmentation?
 - Filamentous algae
 - Fungi
 - Planaria
 - All of these
- Living organism shows?
 - Evolution
 - Self replication
 - Self regulation and Response to external stimuli
 - All of these
- Which two points are known as the twin characteristics of growth?
 - Increase in mass
 - Increase in the number of individuals
 - Metabolism
 - Sense of environment
 - a and b
 - b and c
 - c and a
 - d and a
- Which of the following organism does not reproduce?
 - Sterile worker bees
 - Mules
 - Sterile human couple
 - All of these
- Metabolic reactions take place
 - In vivo
 - In vitro
 - Both 1 and 2
 - Only in unicellular organisms
- Which of the following term include all other terms?
 - Classification
 - Nomenclature
 - Taxonomy
 - Systematics
- Zoological name of lion is?
 - Mangifera
 - Panthera leo
 - Panthera tigris
 - Canis lupus familiaris
- In binomial nomenclature
 - Bothe genus and species are printer in italics
 - Genus and species maybe of same name
 - Both the initial letters in genus and species is capital
 - Genus is written after the species
- The famous botanical garden 'Kew' is located in?
 - Lucknow
 - America
 - England
 - Australia
- Which biological name is wrongly written?
 - Apis India
 - Mangifera Indica
 - Triticum aestivum
 - Felis domesticus
- Common features of chordata are?
 - The presence of notochord in any stage of life
 - Dorsal hollow neural system
 - Paired pharyngeal gill stites
 - All of these
- Match the following

A. Man	1. Order-carnivora
B. Mango	2. Family-poaceae
C. Housefly	3. Genus-musca
D. Tiger	4. Phylum-chordata
E. Wheat	5. Family-anacardiaceae

 - A-1, B-5, C-3, D-4, E-2
 - A-4, B-5, C-3, D-1, E-2
 - A-4, B-2, C-3, D-1, E-5
 - A-1, B-2, C-3, D-4, E-5



- Assertion: Members of a species breed only with others of the same species
Reason: In some cases, members of different species may also breed, producing sterile of fertile off spring
 - If both the assertion and the reason are true and the reason is a correct explanation of the assertion
 - If both the assertion and the reason are true but the reason is not a correct explanation of the assertion
 - If the assertion is true but the reason is falls
 - If both the assertion and reason are falls
- Single-horned Rhinos are found in?
 - Ghana
 - Bastard of Madhya pradesh
 - Kaziranga Nation Park
 - Khasi in Meghalaya
- What is the criteria used by whittaker for classification?
 - Cell structure
 - Thallus organization
 - Mode of Nutrition
 - Reproduction
 - Phylogenetic relationship
 - Biochemical deference
 - Physiological character
 - All except e and f
 - All except e and g
 - All except f and g
 - All except c and d
- Phylogeny refers to?
 - Morphology
 - Physiology
 - Reproduction
 - Evolutionary relationship
- Most abundant micro organism are?
 - Bacteria
 - Virus
 - Amoeba
 - Paramecium
- Most of the bacteria are?
 - Chemo-autotrophs
 - Photo-autotrophs
 - Heterotroph
 - Holozoic
- Find out the total number of false statements.
 - Cyano bacteria have chlorophylla like green plants
 - Bacteria which oxidizes various inorganic substance such as nitrates and ammonia and uses the released energy for ATP production are chemosynthesis autotrophic bacteria
 - Heterotrophic bacteria are less in abundance in nature
 - Majority of heterotrophic bacteria are decomposers
 - Chemosynthetic autotrophic bacteria play an important role in recycling of nutrients like nitrogen, phosphorus iron and sulphur

- 1) a 2) b 3) c 4) d, e
- following features belong to
 - complete lacking of cell wall
 - Anaerobic
 - Smallest living cell
 - Many of them are pathogenic to plant and animals
 - Chrysophytes
 - Prions
 - Viroids
 - Mycoplasma
- Amoeboid protozoans
 - Live in fresh water, seawater or moist soil
 - Captures prey by putting pseudopodia
 - Marine forms have shells on their surface
 - All of the above
- Sleeping sickness is caused by
 - Plasmodium
 - Paramoecium
 - Trypanosoma
 - Entamoeba
- Which is not correct matching
 - Rust-Puccinia
 - Yeast-Bread and beer
 - Chrysophyte-Diatomaceous earth
 - Penicillium- Red tide



- Virus is
 - Completely non-living
 - Inter crystalline structure outside the living cell
 - Cellular organism
 - One of whittaker's classification
- 'Virus' the name means
 - Venom or Poisonous fluid
 - Acellular form
 - Non-cellular form
 - The connecting link between living and non-living
- Agar is commercially obtained from
 - Gelidium and Gracilaria
 - Laminaria and Spirulina
 - Chlorella and Spirullina
 - Chlamydomonas and Spirogyra
- Pyrenoids are located in
 - Cytoplasm
 - Mitochondria
 - Chloroplast
 - Nucleus
- Female sex organ of bryophytes is
 - Oval in shape
 - Irregular
 - Flask shaped
 - Depends on the organism
- In open type of circulatory system
 - Blood flow in sinuses
 - Blood pressure is low and Irregular
 - It is found in arthropods and Molluscs (Except cephalopods)
 - All are true
- Select in incorrect matching
 - Locusta-Locust
 - Cucumaria-Sea cucumber
 - Meandrina-Sea anemone
 - Echinus-Sea urchin
- Select from the following total number of organisms which contain the word 'sea' in their common names.

Physalia, Adamsia, Pennatula, Gorgonia, Meandrina, Hydra, Auralia, Obelia.



Modala Mallesh
Subject Expert
Palem, Nakrekal
Nalgonda
99895 35675

- 1) 2 2) 3 3) 4 4) 5
- Which of the following are features of chordates.
 - Notochord is present
 - CNS is dorsal, hollow and single
 - Pharynx is perforated by gill slits
 - Heart is ventral
 - A post anal is present
 - All except d
 - All except b
 - All of these
 - All except e
- The study of fishes is called
 - Ichthyology
 - Serpentology
 - Saurology
 - Chonchology
- Limbless amphibian is
 - Frog
 - Tree frog
 - Ichthyopis
 - Bufo
- Assertion (A): Birds have one ovary
Reason (B): This reduces the body weight for flight
 - Both A and R are true and R is correct explanation of the A
 - Both A and R are true but R is not correct explanation of the A
 - A is true but R is falls
 - Both A and R are falls
- Choose the correct statement
 - All cyclostomes do not possess jaws and paired fins
 - All reptiles have a three-chambered heart
 - All pisces have gills covered by an operculum
 - All mammals are viviparous
- Which of the following is rat
 - Felis
 - Canis
 - Bat
 - Rattus
- Which fish possess poison sting?
 - Scoliodon (dog fish)
 - Trygon
 - Torpedo
 - Pristis (saw fish)
- Larva of hemichordate is?
 - Amphiblastula
 - Torneria
 - Ammocoete
 - Planula
- Water path in sponges is
 - Ostia - Spongocoel - Osculum
 - Osculum - Spongocoel - Osculum
 - Ostia - Spongocoel - Ostia
 - Spongocoel - Ostia - Osculum

ANSWERS

1-4	2-4	3-1	4-4	5-3	6-4
7-2	8-1	9-3	10-2	11-4	12-2
13-2	14-3	15-3	16-4	17-1	18-3
19-1	20-4	21-4	22-3	23-4	24-2
25-1	26-1	27-3	28-3	29-4	30-3
31-3	32-3	33-1	34-3	35-1	36-1
37-4	38-3	39-2	40-1		