

# RRB NTPC CBT I



## GENERAL AWARENESS QUESTIONS FOR ALL COMPETITIVE EXAMS

SSC CGL  
UPSC  
DRDO

SSC CHSL  
RAILWAYS  
SSC MTS



RRB NTPC | SSC CHSL | SSC CGL | UPSC | GENERAL AWARENESS QUESTIONS

Stay Connected With SPNotifier	
	
	 TM
	

**EBooks for Bank Exams, SSC & Railways 2020**

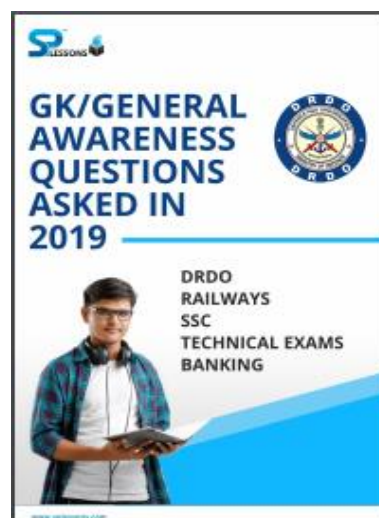
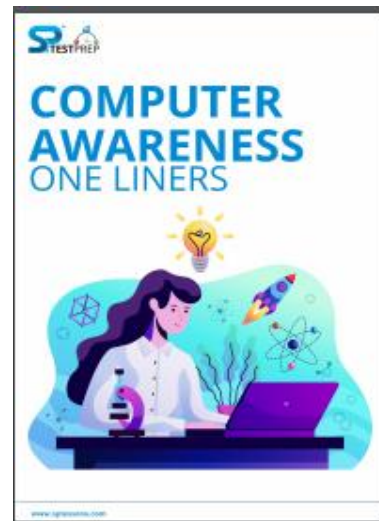
**General Awareness EBooks**

**Computer Awareness EBooks**

**Monthly Current Affairs Capsules**



RRB NTPC | SSC CHSL | SSC CGL | UPSC | GENERAL AWARENESS QUESTIONS





RRB NTPC | SSC CHSL | SSC CGL | UPSC | GENERAL AWARENESS QUESTIONS



[Click Here to Download the E Books for Several Exams](#)

Click here to check the topics related [RRB NTPC](#)

[RRB NTPC Roles and Responsibilities](#)

[RRB NTPC ID Verification](#)

[RRB NTPC Instructions](#)

[RRB NTPC Exam Duration](#)

[RRB NTPC EXSM PWD Instructions](#)

[RRB NTPC Forms](#)

[RRB NTPC FAQ Test Day](#)



## RRB NTPC | SSC CHSL | SSC CGL | UPSC | GENERAL AWARENESS QUESTIONS

1. Which Rashtrakutas ruler built the famous Kailash temple of Siva at Ellora?

- A. Dantidurga
- B. Amoghvarsha 1
- C. Krishan 1
- D. Vats raj

Answer: C

2. The Rashtrakutas kingdom was founded by.....

- A. Dandi Durga
- B. Amoghvarsha
- C. Govinda III
- D. Indra III

Answer: A

3. The paintings in the Ajanta and Ellora caves are indicative of development of art under the.....

- A. Rashtrakutas
- B. Pallavas
- C. Pandya's
- D. Chalukya

Answer: A

4. The famous Kailas temple cut out of the solid rock at Ellora was built under the patronage of the....

- A. Cholas
- B. Kadambas
- C. Pallavas
- D. Rashtrakutas

Answer: D

5. The existence of Parallel Economy refers to the existence of \_\_\_\_\_.

- A. Foreign investment
- B. Call money
- C. Hot money
- D. Block money

Answer: C



## RRB NTPC | SSC CHSL | SSC CGL | UPSC | GENERAL AWARENESS QUESTIONS

6. The speaker of the Lok Sabha appoints who among the following?

- A. Leader of Opposition
- B. Prime minister
- C. Two members of the Anglo-Indian community
- D. Deputy Speaker of the Lok Sabha

Answer: A

7. Who among the following non-members has the right to participate in the proceedings of the Parliament, though not to vote?

- A. RBI Governor
- B. CBI chief
- C. Attorney General
- D. Chief Justice of India

Answer: C

8. Which state has officially declared the name of its capital city as Amaravathi?

- A. Karnataka
- B. Andhra Pradesh
- C. Telangana
- D. Tamil Nadu

Answer: B

9. The refineries at Mathura, Digboi and Panipat are set up by

- A. Indian Oil Corporation Ltd.
- B. Hindustan Petroleum Corporation Ltd.
- C. Bharat Petroleum Corporation Ltd.
- D. Crude Distillation unit of Madras Refineries Ltd.

Answer: A

10. What is the predominant type of Indian agriculture?

- A. Commercial agriculture
- B. Extensive agriculture
- C. plantation agriculture
- D. subsistence agriculture

Answer: D



## RRB NTPC | SSC CHSL | SSC CGL | UPSC | GENERAL AWARENESS QUESTIONS

**11. Which of the following has a potential for the harnessing of tidal energy in India?**

- A. Gulf of Cambay
- B. Gulf of Mannar
- C. Backwaters of Kerala
- D. Chilka lake

Answer: A

**12. The state having the largest area of forest cover in India is**

- A. Arunachal Pradesh
- B. Haryana
- C. Madhya Pradesh
- D. Assam

Answer: C

**13. Who was the first administrator-statesman to attempt planning as a means for economic development?**

- A. Sir CP Ramaswami Aiyar
- B. M Viswesvarayya
- C. VT Krishnamachari
- D. C Rajagopalachari

Answer: B

**14. An economy is at the take off stage on its path to development when it**

- A. becomes stagnant
- B. begins steady growth
- C. is liberalized
- D. gets maximum foreign aid

Answer: B

**15. Which of the following Five Year Plans recognized human development as the core of all developmental efforts?**

- A. Eighth Five Year Plan
- B. Seventh Five Year Plan
- C. Fifth Five Year Plan
- D. Third Five Year Plan



## RRB NTPC | SSC CHSL | SSC CGL | UPSC | GENERAL AWARENESS QUESTIONS

Answer: A

**16. Which Indian state has the largest number of cotton textile mills?**

- A. Madhya Pradesh
- B. Maharashtra
- C. Gujarat
- D. West Bengal

Answer: B

**17. Which of the following anti-satellite missile is tested by India on 27 March, 2019?**

- A. Mission Antriksh
- B. Mission Gagan
- C. Mission Shakti
- D. Mission Destruction

Answer: C

**18. Which state of India became first to reserve a government job for HIV positive candidates?**

- A. Uttar Pradesh
- B. Mizoram
- C. Kerala
- D. Maharashtra

Answer: C

**19. Exposure to which light may accelerate aging?**

- A. Blue light
- B. Red Light
- C. Yellow Light
- D. None of the above

Answer: A

**20. Which among the following country first reached the 'Dark Side' of the Moon?**

- A. India
- B. USA
- C. China
- D. Russia





## RRB NTPC | SSC CHSL | SSC CGL | UPSC | GENERAL AWARENESS QUESTIONS

Answer: C

**21. Who is the winner of the US Open 2019 Men's title?**

- A. Roger Federer
- B. Rafael Nadal
- C. Daniil Medvedev
- D. Novak Djokovic

Answer: B

**22. Which of the following is not fit in the match?**

- A. French Open
- B. US Open
- C. Australian Open
- D. Cincinnati Masters

Answer: D

**23. Which of the following region has won the Ranji Trophy tournament 2019?**

- A. Saurashtra
- B. Mumbai
- C. Vidarbha
- D. Rajasthan

Answer: C

**24. Achanta Sharath Kamal belongs to which sport?**

- A. Squash
- B. Badminton
- C. Boxing
- D. Table Tennis

Answer: D

**25. What is the number of women matches officials across different International Cricket Council panels?**

- A. 10
- B. 12
- C. 14
- D. 8



Answer: B

Stay Connected With SPNotifier	

[RRB NTPC Roles and Responsibilities](#)

[RRB NTPC Salary](#)

[RRB NTPC Career Growth](#)



---

**RRB NTPC | SSC CHSL | SSC CGL | UPSC | GENERAL AWARENESS QUESTIONS**

