

# RRB NTPC CBT I



## GENERAL INTELLIGENCE QUESTIONS FOR ALL COMPETITIVE EXAMS

SSC CGL  
UPSC  
DRDO

SSC CHSL  
RAILWAYS  
RBI

IBPS RRB  
SBI PO  
NABARD A, B

SIB PO



## RRB NTPC CBT I GENERAL INTELLIGENCE QUESTIONS

### Stay Connected With SPNotifier



TM



### EBooks for Bank Exams, SSC & Railways 2020

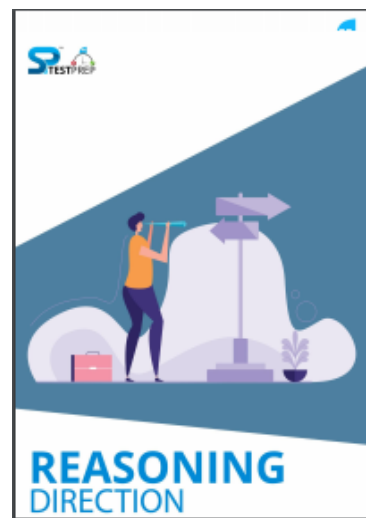
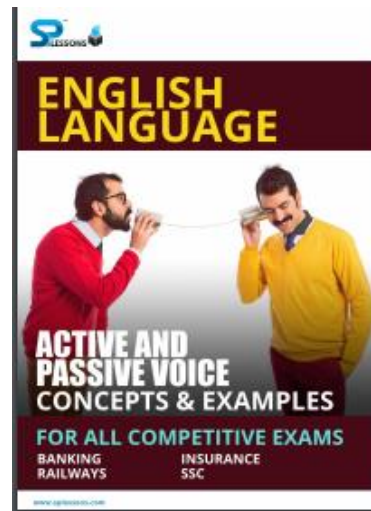
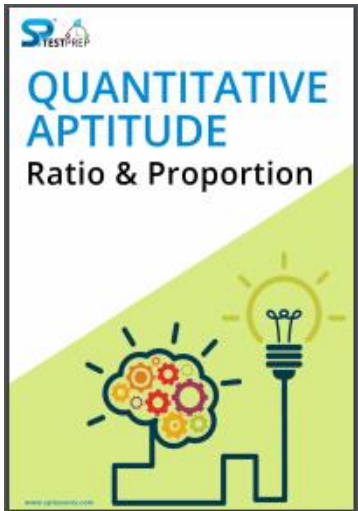
#### General Awareness EBooks

#### Computer Awareness EBooks

#### Monthly Current Affairs Capsules



## RRB NTPC CBT I GENERAL INTELLIGENCE QUESTIONS





## RRB NTPC CBT I GENERAL INTELLIGENCE QUESTIONS



[Click Here to Download the E Books for Several Exams](#)

Click here to check the topics related [RRB NTPC](#)

[RRB NTPC Roles and Responsibilities](#)

[RRB NTPC ID Verification](#)

[RRB NTPC Instructions](#)

[RRB NTPC Exam Duration](#)

[RRB NTPC EXSM PWD Instructions](#)

[RRB NTPC Forms](#)

[RRB NTPC FAQ Test Day](#)



## RRB NTPC CBT I GENERAL INTELLIGENCE QUESTIONS

1. **Writer : Pen :: ?**

- A. Needle : Tailor
- B. Artist : Brush
- C. Painter : Canvas
- D. Teacher : Class

Answer: C

Explanation:

Here, Worker – Tool relationship has been shown. Writer uses pen for writing. Similarly, Painter works on canvas. Hence, option C is correct.

2. **Brick : Mason :: Colour : ?**

- A. Child
- B. Teacher
- C. Painter
- D. Potter

Answer: C

Explanation:

Mason uses bricks to construct buildings. Similarly, Painter uses colour to make art-pieces.

Hence, option C is correct.



3. **Fox : Cunning :: Rabbit : ?**

- A. Courageous
- B. Dangerous
- C. Timid
- D. Ferocious

Answer: C

Explanation:

Here animal-behaviour relationship has been shown. Fox is characterised by its cunningness. Similarly, rabbit is considered as timid.

Hence, option C is correct.

4. In a certain code 'SEQUENCE' is coded as 'FDOFVRFT'. How is 'CHILDREN' coded in that code?



## RRB NTPC CBT I GENERAL INTELLIGENCE QUESTIONS

- A. OFESJMID
- B. OFSEMJID
- C. OFSEJIMD
- D. OFSEJMID

Answer: B

Explanation:

Reverse the word and +1 to each letter. The reverse of CHILDREN is NERDLIHC. add 1 to each letter. Therefore, the code of CHILDREN becomes OFSEMJID.

### 5. What is emotional intelligence?

- A. The ability to monitor one's own and others' feelings and one's thinking and actions
- B. The ability to not get angry when provoked
- C. Being able to 'read' other people
- D. Being persistent and enthusiastic when others are flagging

Answer: A

### 6. What links Lago and The Prince?

- A. They manipulated others for their own ends
- B. Their desire for power
- C. Their bullying and violent nature
- D. They both got angry very quickly

Answer: A

### 7. What is one major criticism of EI?

- A. That it is just the ability to show empathy
- B. It does not exist
- C. Women display it more than men
- D. There is a lack of empirical data or valid definition

Answer: D

### 8. Look at this series: 21, 9, 21, 11, 21, 13, 21, ... What number should come next?

- A. 14
- B. 15
- C. 21
- D. 23

Answer: B



## RRB NTPC CBT I GENERAL INTELLIGENCE QUESTIONS

### Explanation:

In this alternating repetition series, the random number 21 is interpolated every other number into an otherwise simple addition series that increases by 2, beginning with the number 9.

**9. Look at this series: 3, 4, 7, 8, 11, 12, ... What number should come next?**

- A. 7
- B. 10
- C. 14
- D. 15

Answer: D

### Explanation:

This alternating addition series begins with 3; then 1 is added to give 4; then 3 is added to give 7; then 1 is added, and so on.

**10. Look at this series: 8, 22, 8, 28, 8, ... What number should come next?**

- A. 9
- B. 29
- C. 32
- D. 34

Answer: D

### Explanation:

This is a simple addition series with a random number, 8, interpolated as every other number. In the series, 6 is added to each number except 8, to arrive at the next number.

**11. Look at this series: 14, 28, 20, 40, 32, 64, ... What number should come next?**

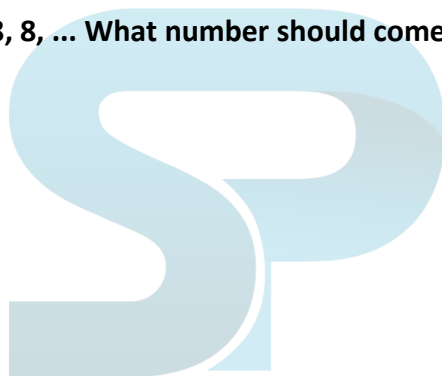
- A. 52
- B. 56
- C. 96
- D. 128

Answer: B

### Explanation:

This is an alternating multiplication and subtracting series: First, multiply by 2 and then subtract 8.

**12. 35 : 53 :: 56 : ?**





## RRB NTPC CBT I GENERAL INTELLIGENCE QUESTIONS

- A. 50
- B. 60
- C. 65
- D. 70

Answer: C

Explanation:

To interchange the digit of the number we have found

35 → 53

56 → 65

13. 213 : 300 :: 170 : ?

- A. 227
- B. 237
- C. 247
- D. 257

Answer: D

Explanation:

As,  $213 + 87 = 300$

Similarly,  $170 + 87 = 257$



14. 43 : 1 :: 52 : ?

- A. 1
- B. 2
- C. 3
- D. 4

Answer: C

Explanation:

As,  $43 : 1 \Rightarrow 4 - 3 = 1$

Similarly,  $52 : 3 \Rightarrow 5 - 2 = 3$

15. 9 : 28 :: 65 : ?

- A. 169





## RRB NTPC CBT I GENERAL INTELLIGENCE QUESTIONS

- B. 196
- C. 189
- D. 195

Answer: B

Explanation:

As,  $9 \times 1 = 9$

$28 = 9 \times 3 + 1$

Similarly,  $65 = 65 \times 1$

$196 = 65 \times 3 + 1$

16. **213 : 300 :: 170 : ?**

- A. 227
- B. 237
- C. 247
- D. 257

Answer: D

Explanation:

As,  $213 + 87 = 300$

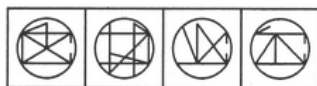
Similarly,  $170 + 87 = 257$



17. Find out the alternative figure which contains figure (X) as its part.



(X)



A. B. C. D.

Answer: B

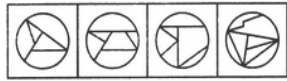
Explanation:





## RRB NTPC CBT I GENERAL INTELLIGENCE QUESTIONS

18. Find out the alternative figure which contains figure (X) as its part.



A. B. C. D.

Answer: B

Explanation:



19. Look at this series: 2, 4, 6, 8, 10, ... What number should come next?

- A. 11
- B. 12
- C. 13
- D. 14

Answer: B

Explanation:

This is a simple addition series. Each number increases by 2.



20. In certain code 'HILTON' is written as 'I H T L N O'. How is 'BILLION' written in that code?

- A. IBLLION
- B. IBOILLN
- C. IBLLOIN
- D. IBLOILN

Answer: C

Explanation:

Letters are interchanged in each pair. So code of BI become IB, IO become OI. So code BILLION will be IBLLOIN

21. In each of the following questions, find which one word cannot be made from the letters of the given word. CORRESPONDING



## RRB NTPC CBT I GENERAL INTELLIGENCE QUESTIONS

- A. DISCERN
- B. GRINDER
- C. DROOP
- D. SUPERIOR

Answer: D

22. In each of the following questions, find which one word cannot be made from the letters of the given word. **TOURNAMENT**

- A. NORMAN
- B. ROTTEN
- C. MANOUEVRE
- D. MANNER

Answer: C

Explanation:

23. In each of the following questions, find which one word cannot be made from the letters of the given word. **CORRESPONDING**

- A. DISCERN
- B. GRINDER
- C. DROOP
- D. SUPERIOR

Answer: D

24. In each of the following questions, find which one word cannot be made from the letters of the given word. **CHROMATOGRAPHIC**

- A. PRAGMATIC
- B. PHOTO
- C. GOTHAM
- D. MARGIN

Answer: D

Explanation:

25. Look at this series: 80, 10, 70, 15, 60, ... What number should come next?

- A. 20
- B. 25
- C. 30




## RRB NTPC CBT I GENERAL INTELLIGENCE QUESTIONS

D. 50

Answer: A

Explanation:

This is an alternating addition and subtraction series. In the first pattern, 10 is subtracted from each number to arrive at the next. In the second, 5 is added to each number to arrive at the next.

Stay Connected With SPNotifier	
	
	
	

[RRB NTPC Roles and Responsibilities](#)

[RRB NTPC Salary](#)



---

RRB NTPC CBT I GENERAL INTELLIGENCE QUESTIONS

RRB NTPC Career Growth

