



RRB NTPC CBT I

MODEL PAPER 1



RRB NTPC CBT I MODEL PAPER 1

Stay Connected With SPNotifier	

EBooks for Bank Exams, SSC & Railways 2020

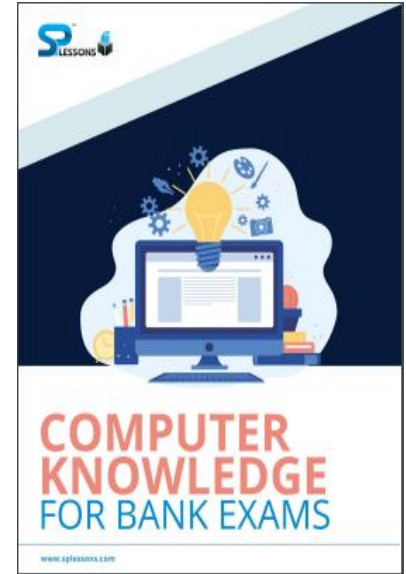
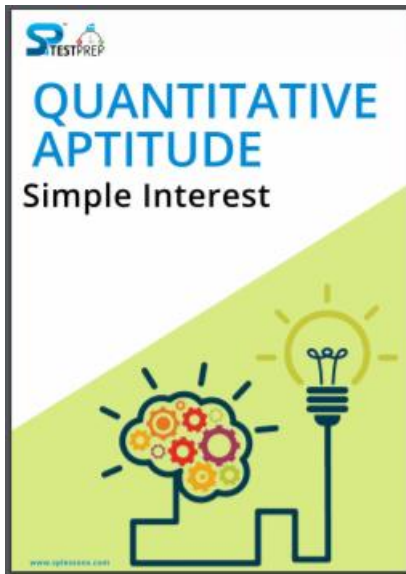
General Awareness EBooks

Computer Awareness EBooks

Monthly Current Affairs Capsules



RRB NTPC CBT I MODEL PAPER 1



[Click Here to Download the E Books for Several Exams](#)

Click here to check the topics related [RRB NTPC](#)

[RRB NTPC Roles and Responsibilities](#)

[RRB NTPC ID Verification](#)

[RRB NTPC Instructions](#)

[RRB NTPC Exam Duration](#)

[RRB NTPC EXSM PWD Instructions](#)

[RRB NTPC Forms](#)

[RRB NTPC FAQ Test Day](#)



RRB NTPC CBT I MODEL PAPER 1

1. When was Television separated from Akashvani (radio) as an independent organization?

- A. 1959
- B. 1965
- C. 1976
- D. 1982

Answer- C

2. When water condenses into ice

- A. heat is absorbed
- B. heat is released
- C. heat remains unchanged
- D. None of these

Answer- B

3. Which of the following inert gases is not found in atmosphere?

- A. Xenon
- B. Argon
- C. Helium
- D. Radon

Answer- D

4. Which of the following diffuses at the fastest rate?

- A. Solid
- B. Gas
- C. Liquid
- D. None of these

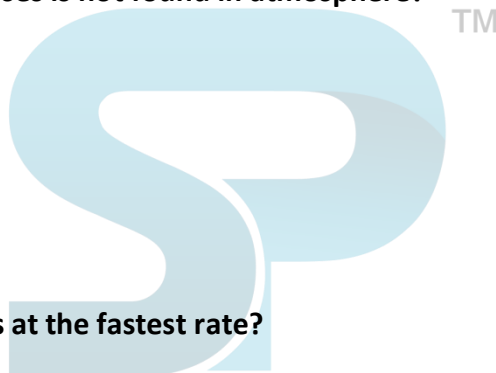
Answer- B

5. What temperature at Celsius scale is equal to 300°K.?

- A. 30°C
- B. 27°C
- C. 300°C
- D. None of these

Answer- B

6. The United Nations imposed sanctions on recently due to nuclear issue.





RRB NTPC CBT I MODEL PAPER 1

- A. Japan
- B. China
- C. North Korea
- D. South Korea

Answer- C

7. The capital of Pandya dynasty was

- A. Mysore
- B. Kanchipuram
- C. Madurai
- D. Dwarsamudra

Answer- C

8. Tripitak a religious scripture of

- A. Jainism
- B. Hinduism
- C. Buddhism
- D. Muslim

Answer- C

9 Who is the writer of 'Adhe— Adhure'?

- A. Mohan Rakesh
- B. Premchand
- C. S.K. Tripathi 'Nirala'
- D. Ashok Vajpayee

Answer- A

10. By which Constitutional amendment, fundamental duties were incorporated in the Indian Constitution?

- A. 42nd
- B. 43rd
- C. 44th
- D. 39th

Answer- A





RRB NTPC CBT I MODEL PAPER 1

11. The headquarters of Central Food Technology Research Institute is located in

- A. Delhi
- B. Anand
- C. Ahmedabad
- D. Mysore

Answer- D

12. Which is common in Jainism and Buddhism both?

- A. Non-violence
- B. Violence
- C. Fast
- D. Way of worship

Answer- A

13. Light Year is used to measure

- A. intensity of light
- B. mass
- C. time
- D. astronomical distance

Answer- D

14. Which of the following is used in the ripening of fruits?

- A. Ethylene
- B. Nitrogen
- C. Carbon dioxide
- D. Hydrogen

Answer- A

15. Which of the following was' involved in Alipore bomb case?

- A. Aurobindo Ghosh
- B. P.C. Banerjee
- C. Bipin Chandra Pal
- D. Subhash Chandra Bose

Answer- A

16. The Sikh Guru Arjun Dev was assassinated during the rule of





RRB NTPC CBT I MODEL PAPER 1

- A. Humayun
- B. Akbar
- C. Shahjehan
- D. Jehangir

Answer- D

17. In an organic compound, which element is generally present in addition to hydrogen?

- A. Phosphorus
- B. Sulphur
- C. Nitrogen
- D. Carbon

Answer- B

18. The process by which energy is generated in' the sun is the

- A. fusion of Uranium
- B. fusion of Helium
- C. fusion of Hydrogen
- D. None of these

Answer- C

19. What is the source of electric energy in an artificial satellite?

- A. a mini nuclear reactor
- B. a dynamo
- C. a thermopile
- D. solar cells

Answer- D

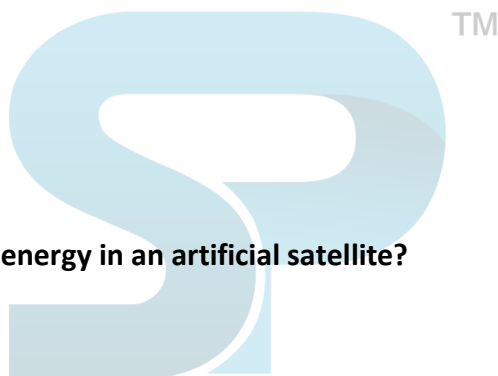
20. Ramanuja preached

- A. Ahimsa
- B. Gyan
- C. Bhakti
- D. The Vedas

Answer- C

21. Who did not participate in the revolt of 1857?

- A. Rani Lakshmibai
- B. Bhagat Singh





RRB NTPC CBT I MODEL PAPER 1

- C. Tantya Tope
- D. Nana Saheb

Answer- B

22. On October 17, 1940, the individual Satyagraha was inaugurated by

- A. Sardar Vallabhbhai Patel
- B. Jawaharlal Nehru
- C. M.K. Gandhi
- D. Acharya Vinoba Bhave

Answer- D

23. The biggest producer of fish in the world is

- A. China
- B. Russia
- C. Japan
- D. Norway

Answer- A

24. In which state is Silent Valley located?

- A. Tamil Nadu
- B. Kerala
- C. Assam
- D. Arunachal Pradesh



Answer- B

25. Who decides whether a bill is a Money Bill or not?

- A. Speaker of Lok Sabha
- B. Prime Minister
- C. President
- D. Parliamentary Committee

Answer- B

26. Solid carbon dioxide is called

- A. soft ice
- B. dry ice
- C. white ice
- D. None of these



RRB NTPC CBT I MODEL PAPER 1

Answer- B

27. When 1 kg of a liquid is converted from liquid to vapour, the absorbed heat is called

- A. latent heat of vaporization.
- B. latent heat of fusion of ice
- C. latent heat of sublimation
- D. None of these

Answer- A

28. Should all universities start taking on-line admission with immediate effect at all levels in the entire country?

- i. No, because every student has no easy access to internet
 - ii. Yes, it will free the students and their parents from long standing problem of knocking at the doors of different colleges and queuing up.
- A. Only argument (i) is strong
 - B. Only argument (ii) is strong
 - C. Neither argument (i) nor (ii) is strong
 - D. Both the arguments (i) and (ii) are strong

Answer- D

29. Product Fair and Lovely is related to

- A. Rocket Benkisar
- B. ITC
- C. P and G
- D. HLL

Answer- C

30. Should government make it compulsory that all private medical institutions be included in the general admission test conducted by the government?

- i. No, private institutions should have the right so that they decide their own admission strategy that is more suitable for work management.
 - ii. Yes, all medical institutions whether private or government should adopt same admission standard.
- A. Only argument (i) is strong



RRB NTPC CBT I MODEL PAPER 1

- B. Only argument (ii) is strong
- C. Either argument (i) or (ii) is strong
- D. Neither argument (i) nor (ii) is strong

Answer- B

31. In case the President of India decides to resign, he will address his letter of resignation to

- A. Prime Minister
- B. Chief Justice
- C. Speaker of Lok Sabha
- D. Vice-President

Answer- D

32. The metal extracted from Bauxite is

- A. Silver
- B. Copper
- C. Manganese
- D. Aluminium

Answer- D

33. They Cyclone represent a position of atmosphere in which

- A. Low pressure in the centre and high pressure around
- B. There is high pressure in the centre and low pressure around
- C. There is low pressure all around
- D. None of these

Answer- A

34. 'Sea of Tranquility' is the name given to

- A. Atlantic Ocean
- B. A specific area of Antarctica
- C. A specific area on moon's surface
- D. None of these

Answer- D

35. Capital of Pallavas was

- A. Arcot
- B. Kanchi
- C. Malkhed



RRB NTPC CBT I MODEL PAPER 1

D. Banvasi

Answer- B

36. Onam is an important festival of

- A. Tamil Nadu
- B. Kerala
- C. Andhra Pradesh
- D. Karnataka

Answer- B

37. How much does our body contain water by mass?

- A. 65%
- B. 70%
- C. 60%
- D. None of these

Answer- B

38. What determines the sex of a child?

- A. Chromosomes of the father
- B. Chromosomes of the mother
- C. RH factor of the parents
- D. Blood group of the father



Answer- A

39. The two civilizations which helped in the formation of Gandhara School of Arts are:

- A. Indian and Roman
- B. Indian and Egyptian
- C. Greek and Roman
- D. Indian and Greek

Answer- A

40. 'Thinkpad' is a laptop associated with which of the following companies?

- A. HP
- B. TCS
- C. Infosys
- D. IBM



RRB NTPC CBT I MODEL PAPER 1

Answer- A

41. The first summit of SAARC was held at

- A. Kathmandu
- B. Colombo
- C. New Delhi
- D. Dhaka

Answer- D

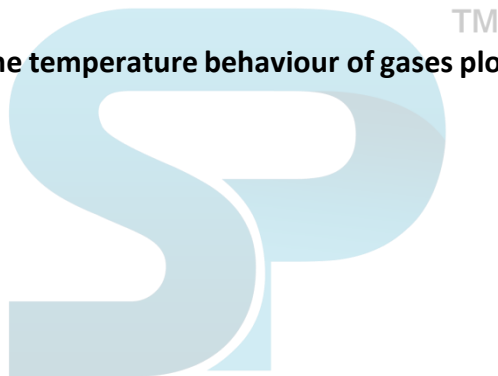
42. The wire of flash bulb is made of

- A. Copper
- B. Barium
- C. Magnesium
- D. Silver

Answer- C

43. The curves showing the volume temperature behaviour of gases plotted at different fixed pressures are called

- A. isochors
- B. isobars
- C. V.T.P. curves
- D. isocurves



Answer- B

44. Project Tiger was launched in

- A. 1973
- B. 1976
- C. 1978
- D. 1983

Answer- A

45. How many letters in the word TRYST have as many letters between them as in the alphabet?

- A. None
- B. 2
- C. 3
- D. 4

Answer- A



RRB NTPC CBT I MODEL PAPER 1

46. From the alternatives, select the set which is most alike the set (23, 29, 31).

- A. (17, 21, 29)
- B. (31, 37, 49)
- C. (13, 15, 23)
- D. (41, 43, 47)

Answer- D

47. What should come in place of the question mark (?) in the following number series?

13 13 65 585 7605 129285?

- A. 2456415
- B. 2235675
- C. 2980565
- D. 2714985

Answer- D

48. If "VEHEMENT" is written as "VEHETNEM" then in that code how will you code. "MOURN FUL"?

- A. MOURLUFN
- B. MOUNULFR
- C. OURMNFUL
- D. URNFULMO

Answer- A

49. MOLLIFY is to APPEASE as APPURTENANCE is to?

- A. gratify
- B. avarice
- C. accessory
- D. amend

Answer- C

50. Praduman is older than Janaki; Shreshtha is older than Kshama; Ravindra is not as old as Shreshtha but is older than Janaki. Kshama is not as old as Janaki. Who is the youngest?

- A. Praduman
- B. Janaki
- C. Shreshtha
- D. Kshama

Answer- D



RRB NTPC CBT I MODEL PAPER 1

51. In a row of children facing North, Bharat is eleventh from the right end and is third to the right of Samir who is fifteenth from the left end. Total how many children are there in the row?

- A. 29
- B. 28
- C. 30
- D. 27

Answer- B

52. Which number is missing?

1, 9, 25, 49?

- A. 121
- B. 81
- C. 16
- D. 169

Answer- B

53. In the word CALIBRE, the previous letter in the English alpha beta replaces each consonant and each vowel is replaced by the next letter and then the order of letters is reversed, which letter will be third from the right end?

- A. A
- B. C
- C. B
- D. K

Answer- D

54. How many such digits are there in the number 57683421, each of which is as far away from the beginning of the number, as they will be when arranged in descending order within the number?

- A. One
- B. Two
- C. Three
- D. More than three

Answer- D

Directions (55, 56, 57): In the following questions there are two words to the left of the sign (: :). Which are connected in some way. The same relationship exists between the third word and one of the four alternatives under it. Find the correct alternative in each case.



RRB NTPC CBT I MODEL PAPER 1

55. Medicine: Sickness: :Book:?

- A. Ignorance
- B. Knowledge
- C. Author
- D. Teacher

Answer- A

56. River: Dam: : Traffic:?

- A. Signal
- B. Vehicle
- C. Motion
- D. Lane

Answer- D

57. Session: Concludes: : ? : Lapses

- A. Leave
- B. Permit
- C. Agent
- D. Policy

Answer- D

58. If $16 = 11$, $25 = 12$, $36 = 15$, then $49 =$

- A. 14
- B. 20
- C. 19
- D. 17

Answer- D

59. Pick out the stranger in the following:

- A. The Ramayan
- B. The Mahabharata
- C. The Geeta
- D. Godan

Answer- D

60. KEATS = 56, SHELLEY = 86, BROWNING = ?





RRB NTPC CBT I MODEL PAPER 1

- A. 45
- B. 37
- C. 50
- D. 102

Ans. (4)

Directions (61—62): What approximate value should come in place of the question mark (?) in the following questions? (You are not expected to calculate the exact value)

61. $(9321 + 5406 \div 1001) (498 + 929 + 660) = ?$

- A. 13.5
- B. 4.5
- C. 16.5
- D. 7.5

Answer- D

62. $561204 \times .58 = ? \times 55555$

- A. 606
- B. 646
- C. 586
- D. 716

Answer- C

63. The difference between the greatest number and the smallest number of 5 digits formed by 0, 1, 2, 3 and 4 using all but. once is:

- A. 32976
- B. 32679
- C. 32769
- D. None of these.

Answer- A

64. Area of a parallelogram whose base is 9 cm and height 4 cm are ____ sq cm.

- A. 9
- B. 4
- C. 36
- D. 13

Answer- C





RRB NTPC CBT I MODEL PAPER 1

65. The number which is neither prime nor composite is

- A. 0
- B. 1
- C. 3
- D. 2

Answer- B

66. The length of a room is three times its breadth. If the perimeter of the room is 64 cm, then its breadth is ____ cm.

- A. 64
- B. 32
- C. 16
- D. 8

Answer- D

67. Aditi read $\frac{4}{5}$ the of Tint in comic book which has 100 pages. How many pages of the book is not yet? read by Aditi?

- A. 40
- B. 60
- C. 80
- D. 20

Answer- D

68. What is the meaning of the word 'beckon'?

- A. gesticulate
- B. did not signal
- C. did not call
- D. invite

Answer- A

69. A box contains coins (equal number of every one) of rupee and half rupee, coins of 25 paise, 10 paise 5 paise value, 2 paise value and one paise value. The total value of coins in the box is Rs. .1158. Find the number of coins of each value.

- A. 500
- B. 400
- C. 700
- D. 600



RRB NTPC CBT I MODEL PAPER 1

Answer- D

70. The area of a rhombus with diagonals 12cm and 20cm is — sq. cm.

- A. 120
- B. 12
- C. 20
- D. 240

Answer- A

71. A piece of road is one kilo- meter in length. We have to supply lamp posts. One post at each end, distance between two consecutive lamp posts is 25 meters the number of lamp posts required is:

- A. 41
- B. 51
- C. 61
- D. 42

Answer- A

72. There are 800 students in a class. On one particular day, if 1 of the students were absent; 10 How many students were present?

- A. 700
- B. 650
- C. 720
- D. 750

Answer- C

73. The quotient in a division sum is 403. The divisor is 100 and the remainder is 58, the dividend is

- A. 40458
- B. 34058
- C. 43058
- D. 40358

Answer- D

74. A labourer was engaged for 25 days on the condition that for every day, he works, he will be paid Rs 2 and for every day, he is absent he will be fined 50 paise. If he receives only Rs. 37.50, find the number of days he was absent.

- A. 5
- B. 6



RRB NTPC CBT I MODEL PAPER 1

- C. 7
- D. 4

Answer- A

75. Which least number should be added to 2600 to make it a perfect square?

- A. 3
- B. 9
- C. 1
- D. 5

Answer- C

76. The unit of radioactivity is

- A. megavolt
- B. curie
- C. weber
- D. quark

Answer- B

77. When 782 is subtracted from the square of a number, the answer is 6460. What is that number?

- A. 109
- B. 113
- C. 112
- D. 115

Answer- C

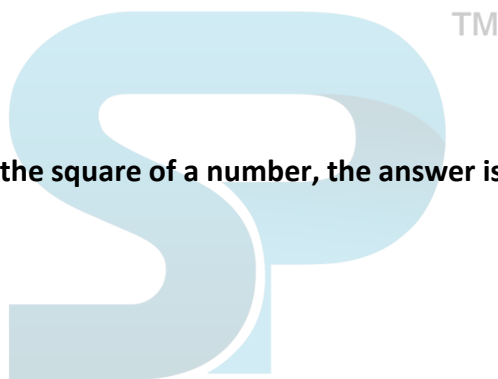
78. The difference between 42% and 28% of a number is 210. What will be 59% of that number?

- A. 900
- B. 420
- C. 885
- D. None of these

Answer- C

79. Ellora caves of Maharashtra were built during the rule of

- A. Rashtrakuta
- B. Pallava
- C. Pal
- D. Chola





RRB NTPC CBT I MODEL PAPER 1

Answer- A

80. The first split in Indian National Congress took place at

- A. Surat
- B. Calcutta
- C. Allahabad
- D. Madras

Answer- A

81. Ginger

- A. transformed flower
- B. transformed root
- C. transformed stem
- D. transformed leaf

Answer- C

82. The famous Kalinga war was fought near

- A. Udaygiri
- B. Nauli
- C. Balasore
- D. Barabati

Answer- A

83. Mig fighter plane manufacturing unit in Orissa is located at

- A. Brahmapur
- B. Sunaveda
- C. Cuttack
- D. Sambalpur

Answer- B

Directions (84—85): Choose the correct passive voice of the sentence at the question place. 84. I remember my father taking me to the zoo

- A. I remember taken to the zoo by my father
- B. I remember being taken to the zoo by my father
- C. I remembered my father taking me to the zoo
- D. None of these

Answer- B



RRB NTPC CBT I MODEL PAPER 1

85. Have you shut the door?

- A. Has the door been shut by you?
- B. Have the door been shut by you?
- C. Has the door been shut?
- D. Have the door been shut by you?

Answer – A

Directions (86 – 87) Choose the single word substitution for the group of words. **86. The motive to earn money**

- A. merchant
- B. mercenary
- C. matinee
- D. materialistic

Answer- B

87. The state of being without wife

- A. saint
- B. (2) bigot
- C. (3) celibacy
- D. (4) bigamy

Answer- C



Directions (88—90): In the following questions there is an error in the one part of each sentence. Choose that part.

88. A towny man (1)/gets (2)/a lot of (3)/comforts (4).

Answer – A

89. Standing (1)/on the roof (2) helicopter (3)/flew over me (4)

Answer – A

90. A motor car which (1) / weighs less then (2) / two tons may be (3) / driven across the bridge (4)

Answer – B

Directions (91—95): Fill In the blanks with appropriate words.

91. A third world — will destroy everything.



RRB NTPC CBT I MODEL PAPER 1

- A. fight
- B. battle
- C. war
- D. avenge

Answer- C

92. He accepted with thanks some humble presents? me.

- A. of
- B. from
- C. with
- D. by

Answer- B

93. Education helps us? ourselves to even unfavourable circumstances.

- A. adapt
- B. adept
- C. adopt
- D. except

Answer- A

94. Several goats were sacrificed at the?

- A. alter
- B. altar
- C. allusion
- D. illusion

Answer- B

95. The news is too good? be credible.

- A. to
- B. for
- C. than
- D. with

Answer- A

96. The antonym of the word 'crude' is

- A. dear
- B. refined





RRB NTPC CBT I MODEL PAPER 1

- C. shallow
- D. wild

Answer- B

97. The synonym of the word 'sparked' is

- A. flickered
- B. flashed
- C. enlivened
- D. Provoked

Answer- B

98. if $32 = 2x$ then $x = ?$

- A. 15
- B. 4
- C. 5
- D. 8

Answer- C

99. Fill in the next number in the series

2 5 8 11 14 ?

- A. 18
- B. 17
- C. 19
- D. 16

Answer- B

100. Smart Kid Insurance policy has been launched for students by:



- A. Tata-AIG
- B. SBI-Card if
- C. ICICI Prudential
- D. LIC

Answer- A





RRB NTPC CBT I MODEL PAPER 1

Stay Connected With SPNotifier	
	
	 TM
	

[RRB NTPC Roles and Responsibilities](#)

[RRB NTPC Salary](#)

[RRB NTPC Career Growth](#)