



# RRB NTPC CBT I

MODEL PAPER 2



## RRB NTPC CBT I MODEL PAPER 2

Stay Connected With SPNotifier	
	
	 TM
	

### **EBooks for Bank Exams, SSC & Railways 2020**

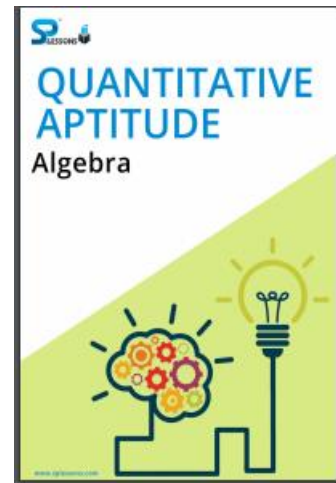
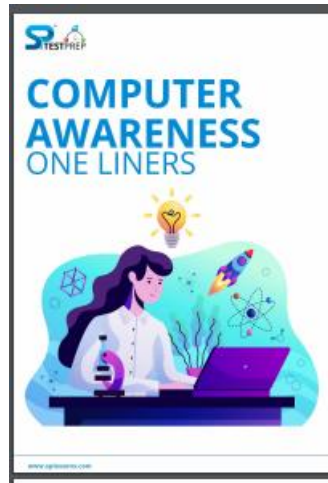
#### **General Awareness EBooks**

#### **Computer Awareness EBooks**

#### **Monthly Current Affairs Capsules**



## RRB NTPC CBT I MODEL PAPER 2



[Click Here to Download the E Books for Several Exams](#)

Click here to check the topics related [RRB NTPC](#)

[RRB NTPC Roles and Responsibilities](#)

[RRB NTPC ID Verification](#)

[RRB NTPC Instructions](#)

[RRB NTPC Exam Duration](#)

[RRB NTPC EXSM PWD Instructions](#)

[RRB NTPC Forms](#)

[RRB NTPC FAQ Test Day](#)



## RRB NTPC CBT I MODEL PAPER 2

1. Where is the Punjab Lalit Kala Academy located?

- A. Muktasar
- B. Ludhiana
- C. Patiala
- D. Chandigarh

Answer: D

2. What does happen when water is condensed into ice?

- A. Heat is absorbed
- B. B) Heat is released
- C. Quantity of heat remains unchanged
- D. None of these

Answer: A

3. Which of the following gases is not a noble gas?

- A. Zenon
- B. Argon
- C. Helium
- D. Chlorine

Answer: D

4. Which of the following diffuses most quickly?

- A. Solid
- B. Gas
- C. Liquid
- D. None of these

Answer: B

5. Which temperature in Celsius scale is equal to 300 K?

- A. 30°C
- B. 27°C
- C. 300°C
- D. None of these

Answer: B

6. First Youth Olympic games will be held in—





## RRB NTPC CBT I MODEL PAPER 2

- A. Japan
- B. China
- C. North Korea
- D. Singapore

Ans : (D)

### 7. Where was the capital of Pandya dynasty situated?

- A. Mysore
- B. Kanchipuram
- C. Madurai
- D. Delhi

Answer: C

### 8. Tripitak is the scripture of—

- A. Jain religion
- B. Hindu religion
- C. Buddhist religion
- D. Muslim religion

Answer: C

### 9. Who is the author of 'Adhe-Adhure'?

- A. Mohan Rakesh
- B. Prem Chand
- C. Nirala
- D. Pant

Answer: A

### 10. Which of the following Constitutional Amendments has included fundamental duties into the Constitution?

- A. 42nd
- B. 43rd
- C. 44th
- D. 39th

Answer: A

### 11. Where is the Central Food Technology Research Institute situated?

- A. Delhi





## RRB NTPC CBT I MODEL PAPER 2

- B. Anand
- C. Ahmedabad
- D. Mysore

Answer: D

**12. Which of the following is common in both, Buddhism and Jainism?**

- A. Nonviolence
- B. Violence
- C. Triratna
- D. Truth

Answer: A

**13. Light-year measures which of the following?**

- A. Intensity of light
- B. Mass
- C. Time
- D. Distance

Answer: D

**14. Which of the following gases is used for ripening the fruits?**

- A. Methane
- B. Ethane
- C. Ethylene
- D. Acetylene

Answer: C

**15. Who among the following was involved in Alipore bomb case?**

- A. Aravind Ghosh
- B. P. C. Banerjee
- C. Bipin Chandra Paul
- D. Chandrashekhar Azad

Answer: A

**16. Sikh Guru Arjundev was contemporary to which of the following rulers?**

- A. Humayun
- B. Akbar
- C. Shahjahan





## RRB NTPC CBT I MODEL PAPER 2

D. Jahangir

Answer: D

**17. Besides hydrogen, which of the following elements is common in organic compounds?**

- A. Phosphorus
- B. Sulphur
- C. Nitrogen
- D. Carbon

Answer: D

**Directions (18–21):** Find the correct meanings of the words given below:

**18. EWE**

- A. Calf
- B. Female sheep
- C. Deer
- D. None of these

Answer: B

**19. Buffalo**

- A. Calf
- B. Baby box
- C. Baby bison
- D. Baby cow

Answer: C

**20. Veneration—**

- A. Esteem
- B. High respect
- C. Devotion
- D. Worship

Answer: B

**21. Vicious—**

- A. Remorseless
- B. Ferocious
- C. Kind





## RRB NTPC CBT I MODEL PAPER 2

D. Wicked

Answer: D

**Directions (22–25):** Choose the word / phrase which is nearest in meaning to the words in question

### 22. Bizarre

- A. Colourful
- B. Odd
- C. Insipid
- D. Smart

Answer: B

### 23. Innuendo

- A. Narration
- B. Insinuation
- C. Insist
- D. Insutale

Answer: B

### 24. Salutory

- A. Welcome
- B. Discharge
- C. Promoting
- D. Remove

Answer: C

### 25. Fictile

- A. Fiction
- B. Moulded
- C. Fictitious
- D. Smooth

Answer: B

### 26. Solid Carbon dioxide is termed as—

- A. Soft ice
- B. Dry ice
- C. White ice







## RRB NTPC CBT I MODEL PAPER 2

D. None of these

Answer: B

**27. 1 kg of a liquid is converted into its vapour at its boiling point. The heat absorbed in the process is called—**

- A. Latent heat of vaporisation
- B. Latent heat of fusion
- C. Latent heat of sublimation
- D. None of these

Answer: A

**28. Whether all the universities in the country should start online admission at all levels with immediate effect?**

- i. No, since all the students may not have access to the internet easily.
- ii. Yes, it may liberate the students and their parents from the long-standing problems of knocking at the doors of different colleges and standing in queue.

- A. Only argument (i) is correct
- B. Only argument (ii) is correct
- C. Neither argument (i) nor argument (ii) is correct
- D. Both the arguments, (i) and (ii), are correct

Answer: D

**29. The product 'Fair and Lovely' is related to—**

- A. WIPRO
- B. I.T.C.
- C. P & G
- D. H.U.L.

Answer: D

**30. Should the Government make it compulsory for the private medical colleges to join the entrance test conducted by the Government?**

- i. No, private institutions should be empowered, so that they may decide their own admission strategy and improve their work-management.



## RRB NTPC CBT I MODEL PAPER 2

ii. Yes, all medical institutions, whether these are private or government's, should adopt the same entrance standard.

- A. Only argument (i) is correct
- B. Only argument (ii) is correct
- C. Either argument (i) is correct or argument (ii) is correct
- D. Neither argument (i) is correct nor argument (ii) is correct

Answer: B

**31. In case the President of India decides to resign, he will address his letter of resignation to—**

- A. Prime Minister
- B. Chief Justice
- C. Speaker of Lok Sabha
- D. Vice-President

Answer: D

**32. The metal extracted from Bauxite is—**

- A. Silver
- B. Copper
- C. Manganese
- D. Aluminium

Answer: D

**33. The Cyclone represents a state of atmosphere in which—**

- A. Low pressure in the center and high pressure around
- B. There is high pressure in the center and low pressure around
- C. There is low pressure all around
- D. None of these

Answer: A

**34. The 'Ocean of Storms' is the name given to—**

- A. Atlantic Ocean
- B. Pacific Ocean
- C. A waterless area on moon surface
- D. None of these

Answer: C

**35. The capital of Pallavas was—**





## RRB NTPC CBT I MODEL PAPER 2

- A. Arcot
- B. Kanchi
- C. Malkhed
- D. Banavasi

Answer: B

**36. Which Indian state was ranked as the No. 2 tourist destination in the world by LONELY PLANET?**

- A. Himachal Pradesh
- B. Tamil Nadu
- C. Kerala
- D. Uttarakhand

Answer: C

**37. How much water is contained in our body by mass?**

- A. 65%
- B. 70%
- C. 60%
- D. None of these

Answer: B

**38. What determines the sex of a child?**

- A. Chromosomes of the father
- B. Chromosomes of the mother
- C. RH factor of the parents
- D. Blood group of the father

Answer: A

**39. The two civilizations which helped in the formation of Gandhara School of Art are—**

- A. Indian and Roman
- B. Indian and Egyptian
- C. Greek and Roman
- D. Indian and Greek

Answer: D

**40. 'Thinkpad' is a laptop associated with which among the following companies?**

- A. HP
- B. TCS





## RRB NTPC CBT I MODEL PAPER 2

- C. Infosys
- D. IBM

Answer: D

**41. The first summit of SAARC was held at—**

- A. Kathmandu
- B. Colombo
- C. New Delhi
- D. Dhaka

Answer: D

**42. The wire of flash bulb is made of—**

- A. Copper
- B. Barium
- C. Magnesium
- D. Silver

Answer: C

**43. The curves showing the volume pressure behaviour of gases plotted at different fixed temperatures are called—**

- A. Isochors
- B. Isothermals
- C. V.T.P. Curves
- D. Isocurves

Answer: B

**44. Project Tiger was launched in—**

- A. 1973
- B. 1976
- C. 1978
- D. 1983

Answer: A

**Directions (45 and 46):** Attempt the question to the best of your judgement.

**45. How many letters in the word TRYST have as many letters between them as in the alpha beta?**

- A. None



## RRB NTPC CBT I MODEL PAPER 2

- B. 2
- C. 3
- D. 4

Answer: B

46. From the alternatives, select the set which is most like the given set.

Given set (23, 29, 31)—

- A. (17, 21, 29)
- B. (31, 37, 49)
- C. (13, 15, 23)
- D. (41, 43, 47)

Answer: D

Directions—What should come in place of question mark (?) in the following number series?

47. 13 13 65 585 7605 129285 ...?...

- A. 2456415
- B. 2235675
- C. 2980565
- D. 2714985

Answer: D

48. If 'VEHEMENT' is written as 'VEHETNEM' then in that code how will you code 'MOURNFUL'?

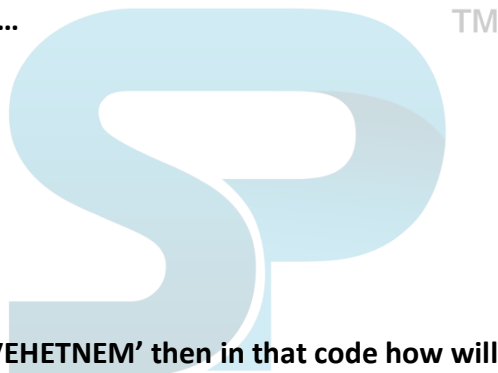
- A. MOURLUFN
- B. MOUNULFR
- C. OURMNFUL
- D. URNFULMO

Answer: A

49. MOLLIFY is to APPEASE as APPURTENANCE is to?

- A. Gratify
- B. Avarice
- C. Accessory
- D. Amend

Answer: C





## RRB NTPC CBT I MODEL PAPER 2

50. Praduman is older than Janaki; Shreshtha is older than Chhama; Ravindra is not as old as Shreshtha but is older than Janaki. Chhama is not as old as Janaki. Who is the youngest?

- A. Praduman
- B. Janaki
- C. Shreshtha
- D. Chhama

Answer: D

51. In a row of children facing North, Bharat is eleventh from the right end and is third to the right of Samir who is fifteenth from the left end. Total how many children are there in the row?

- A. 29
- B. 28
- C. 30
- D. 27

Answer: B

52. Which number is missing ?

45389, ?, 453, 34

- A. 34780
- B. 8354
- C. 4892
- D. 3478



Answer: B

53. If in the word CALIBRE, the previous letter in the English alphabet replaces each consonant and each vowel is replaced by the next letter and then the order of letters is reversed, which letter will be third from the right end?

- (A) A
- (B) C
- (C) B
- (D) K

Answer: D

54. How many such digits are there in the number 57683421, each of which is as far away from the beginning of the number, as they will be when arranged in descending order within the number ?



## RRB NTPC CBT I MODEL PAPER 2

- A. One
- B. Two
- C. Three
- D. More than three

Answer: D

**Direction (55 to 57):** In the following question there are two words to the left of the sign (::) which are connected in some way. The same relationship obtains between the third word and one of the four alternatives under it. Find the correct alternative in each case.

**55. Medicine : Sickness :: Book : ?**

- A. Ignorance
- B. Knowledge
- C. Author
- D. Teacher

Answer: A

**56. River : Dam :: Traffic : ?**

- A. Signal
- B. Vehicle
- C. Motion
- D. Lane

Answer: A



**57. Session : Concludes :: ? : Lapses**

- A. Leave
- B. Permit
- C. Agency
- D. Policy

Answer: D

**58. If  $16 = 11$ ,  $25 = 12$ ,  $36 = 15$ , then  $49 = ?$**

- A. 14
- B. 20
- C. 19
- D. 17

Answer: B



## RRB NTPC CBT I MODEL PAPER 2

59. Pick out the odd in the following—

- A. Ashok—Assam
- B. Poonam—Punjab
- C. Gyanendra—Gujarat
- D. Anjana—Rajasthan

Answer: D

60. KEATS = 25, SHELLEY = 35, BROWNING = ?

- A. 45
- B. 37
- C. 50
- D. 40

Answer: D

**Directions— (Q. 61 and 62)** What approximate value should come in place of question-mark (?) in the following questions? (You are not expected to calculate the exact value)

61.  $(9321 + 5406 + 1001) \div (498 + 929 + 660) = ?$

- A. 13•5
- B. 4•5
- C. 16•5
- D. 7•5

Answer: D

62.  $561204 \times 58 = ? \times 55555$

- A. 606
- B. 646
- C. 586
- D. 716

Answer: C

63. The difference between the greatest number and the smallest number of 5 digits 0, 1, 2, 3, 4 using all but once is—

- A. 32976
- B. 32679
- C. 32769
- D. None of these





## RRB NTPC CBT I MODEL PAPER 2

Answer: A

64. Area of a parallelogram whose base is 9 cm and height 4 cm are ..... sq cm.

- A. 9
- B. 4
- C. 36
- D. 13

Answer: C

65. The number which is neither prime nor composite is—

- A. 0
- B. 1
- C. 3
- D. 2

Answer: B

66. The length of a room is three times its breadth. If the perimeter of the room is 64 cm, then its breadth is ..... cm.

- A. 64
- B. 32
- C. 16
- D. 8

Answer: D

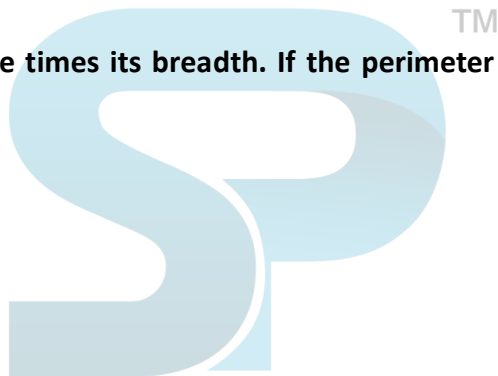
67. Aditi read  $\frac{4}{5}$ th of Tintin comic book which has 100 pages. How many pages of the book is not yet read by Aditi?

- A. 40
- B. 60
- C. 80
- D. 20

Answer: D

68. What is the meaning of beckoned?

- A. Summon by sign or gesture
- B. Did not signal
- C. Did not call
- D. Invite





## RRB NTPC CBT I MODEL PAPER 2

Answer: A

69. A box contains coins (equal no. of every one) of rupee and half rupee, coins of 25 paise, 10 paise, 5 paise value, 2 paise value and one paise value. The total value of coins in the box is Rs. 1158. Find the number of coins of each value.

- A. 500
- B. 400
- C. 700
- D. 600

Answer: D

70. The area of a rhombus with diagonals 12 cm and 20 cm is ..... sq cm.

- A. 120
- B. 12
- C. 20
- D. 240

Answer: A

71. A piece of road is one kilometer in length. We have to supply lamp posts. One post at each end, distance between two consecutive lamp posts is 25 metres. The number of lamp posts required is—

- A. 41
- B. 51
- C. 61
- D. 42

Answer: A

72. There are 800 students in a class. On one particular day, if  $\frac{1}{10}$ th of the students were absent, how many students were present?

- A. 700
- B. 650
- C. 720
- D. 750

Answer: C

73. The quotient in a division is 403. The divisor is 100 and the remainder is 58, the dividend is—

- A. 40458
- B. 34058



## RRB NTPC CBT I MODEL PAPER 2

- C. 43058
- D. 40358

Answer: D

74. A labourer was engaged for 25 days on the condition that for every day, he works, he will be paid Rs. 2 and for every day, he is absent he will be fined 50p. If he receives only Rs. 37.50, find the no. of days he was absent—

- A. 5
- B. 6
- C. 7
- D. 4

Answer: A

Directions— (Q. 75 to 77) Choose the word/phrase which is most opposite in meaning to the word?

75. Quixotic

- A. Visionary
- B. Whimsical
- C. Realistic
- D. Foolish

Answer: C



76. Rabid

- A. Mad
- B. Normal
- C. Furious
- D. Fanatical

Answer: B

77. Scurrilous

- A. Inoffensive
- B. Vulgar
- C. Insulting
- D. Coarse

Answer: A

78. Digits of first place and third place are interchanged of the numbers 349, 483, 766, 598, 674 and then the new numbers are arranged in ascending order. Which would be the fourth number?



## RRB NTPC CBT I MODEL PAPER 2

- A. 483
- B. 766
- C. 674
- D. 598

Answer: D

79. What least number should be added to 2600 to make it a complete square?

- A. 3
- B. 9
- C. 1
- D. 25

Answer: C

80. When sun-light passes through a glass prism, which of the following colours refracts the most?

- A. Blue
- B. Red
- C. Orange
- D. Green

Answer: A

81. If  $(78)^2$  is subtracted from the square of a number, we get 6460. What is that number?

- A. 109
- B. 112
- C. 111
- D. 115

Answer: B

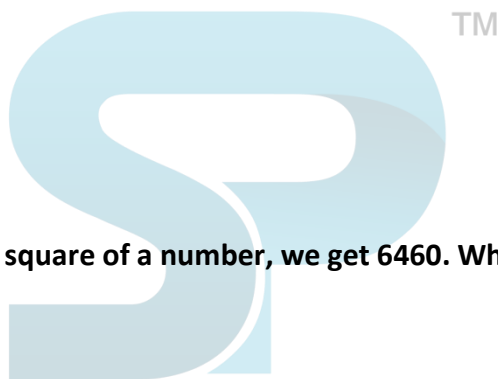
82. The difference between 28% and 42% of a number is 210. What is 59% of this number?

- A. 900
- B. 420
- C. 885
- D. None of these

Answer: C

83. A–B means A is the father of B. A + B means A is the daughter of B. A ÷ B means A is the son of B. A×B means A is the wife of B. Then, what is the relation of P with T in the expression P + S – T?

- A. Son





## RRB NTPC CBT I MODEL PAPER 2

- B. Daughter
- C. Sister
- D. Wife

Answer: C

84. Ellora caves in Maharashtra were built during the rule of which of the following dynasties?

- A. Rashtrakoot
- B. Pallav
- C. Pala
- D. Chola

Answer: A

85. But for the Surgeon's skill, the patient ..... died.

- A. may have
- B. must have
- C. should have
- D. would have

Answer: D

86. I want to see the Principal, ..... I have something to tell him urgently.

- A. so
- B. for
- C. since
- D. and

Answer: C

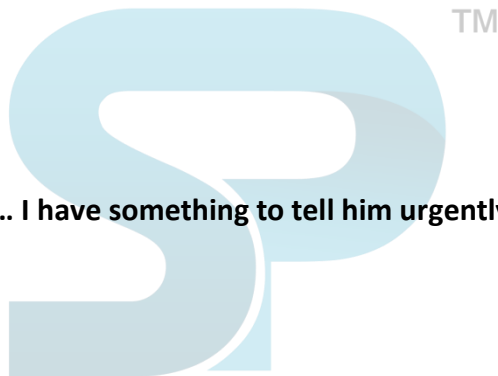
87. I wasn't really listening and didn't ..... what he said.

- A. catch
- B. receive
- C. accept
- D. take

Answer: A

88. The first division of Congress took place in—

- A. Surat
- B. Kolkata
- C. Allahabad





## RRB NTPC CBT I MODEL PAPER 2

D. Chennai

Answer: A

**89. What is ginger?**

- A. Flower
- B. Root
- C. Stem
- D. Leaf

Answer: B

**90. Battle of Kalinga was fought at which of the following places?**

- A. Udaigiri
- B. Dhauli
- C. Balasore
- D. Barabaki

Answer: B

**91. MIG aircraft manufacturing plant is located at which of the following places of Orissa?**

- A. Beharampur
- B. Sunabeda
- C. Koraput
- D. Sambalpur

Answer: C

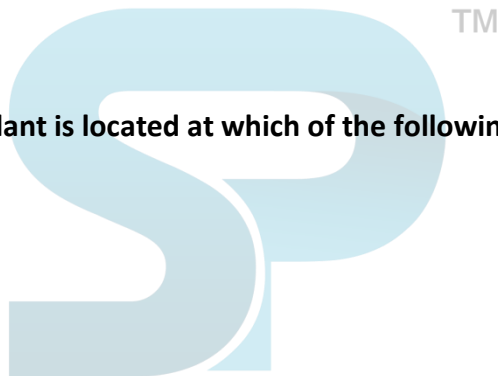
**92. Canary Islands belongs to**

- A. Norway
- B. Spain
- C. New Zealand
- D. Portugal

Answer: B

**93. Titan is the largest natural satellite of planet**

- A. Mercury
- B. Venus
- C. Saturn
- D. Neptune





## RRB NTPC CBT I MODEL PAPER 2

Answer: C

94. Which of the following planets rotates clock wise?

- A. Pluto
- B. Jupiter
- C. Venus
- D. Mercury

Answer: C

95. A difference of 1 degree in longitude at the Equator is equivalent to nearly

- A. 101 km
- B. 111 km
- C. 121 km
- D. 125 km

Answer: B

96. The earliest known Indian script is

- A. Mori
- B. Devanagari
- C. Brahmi
- D. Kharosti



Answer: C

97. How many times the preamble was amended

- A. once
- B. twice
- C. thrice
- D. four times

Answer: A

98. The term socialist was added in the Preamble by the \_\_\_\_\_ amendment

- A. 40th
- B. 42nd
- C. 44th
- D. 49th

Answer: B



## RRB NTPC CBT I MODEL PAPER 2

99. The state with the lowest population in India is

- A. Goa
- B. Tripura
- C. Mizoram
- D. Sikkim

Answer: D

100. Which person or organisation received the Nobel Prize three times so far?

- A. Medame Curie
- B. Linus Pauling
- C. Alexander Flemming
- D. International Committee of the Red cross

Answer: D







## RRB NTPC CBT I MODEL PAPER 2

Stay Connected With SPNotifier	
	
	 TM
	

[RRB NTPC Roles and Responsibilities](#)

[RRB NTPC Salary](#)

[RRB NTPC Career Growth](#)